

# ALASKA DIVISION OF HOMELAND SECURITY & EMERGENCY MANAGEMENT

SITUATION REPORT 23-356 • December 22, 2023



Toll-Free 1.800.478.2337

Anchorage Area 907.428.7000

SEOC 907.428.7100

<p><b><u>SEOC Preparedness Level</u></b></p> <p>Level 2 – Heightened Awareness</p>	<p><a href="http://ready.alaska.gov">http://ready.alaska.gov</a></p>	<p><b><u>National Terrorism Advisory System:</u></b></p> <p><a href="#">Read the NTAS Bulletin here</a></p>
<p><b><u>Maritime Security (MARSEC)</u></b> Level:1- Minimum Appropriate Security Measures</p>	<p><b>WHO Novel Coronavirus Pandemic (COVID-19):</b> <a href="#">2019 Novel Coronavirus</a></p>	<p><b><u>Alaska Military Installation Force Protection Level:</u></b> FPCON Bravo</p>

(Significant changes from previous situation reports are red.)

## **Significant Issues:**

### **Wrangell Landside Disaster:**

State Individual Assistance application hotline and website is open for Wrangell and Prince of Wales Island residents at <https://www.ready.alaska.gov/Recovery/IA> or by phone 1(844) 445-7131. The deadline to apply for State Individual Assistance is January 27, 2024.

### **Tuluksak Power Outage:**

Power plant operators restored Thursday night power failure with standby generators. Main generator failure is currently being assessed. Currently there is no reported water/sewer line freeze up or mass care needs. SEOC remains in close contact with tribal and community officials for any community requests.

### **Point Hope Power Outage:**

SEOC is fully engaged with Point Hope’s multiagency response. Water plant technicians have restored water and sewer to 61 homes. North Slope Borough delivered 20 fans and heating units, 3 chartered flights bringing crew and supplies are also in transit.

### **Savoonga Power Outage:**

Alaska Village Electric Cooperative technicians restored power to community and infrastructure. SEOC Mass Care Group engaged for support and a damage assessment is being conducted.

### **Quinhagak Power Outage:**

SEOC has been fully engaged with a multiagency response to manage state declared disaster needs. Local operators continue to repair the power system, transformers, and utility lines within the Village.

### **Manokotak Generators:**

An emergency backup generator has been resourced and the SEOC is engaged with the National Guard to assess transport options. Generator parts on order and are expected to arrive next week.

## State of Alaska Department of Health (DOH)

The DOH stands ready to assist with all aspects of public health and, in the event of a public health emergency, is supported by the SEOC and other state departments as required. For current information, see:

<https://health.alaska.gov/dph/Pages/default.aspx>

<https://health.alaska.gov/dph/Emergency/Pages/prepared/default.aspx>

## NTAS Bulletin

The U.S. Department of Homeland Security issued an updated National Terrorism Advisory Bulletin on May 24, 2023. The current and expired bulletins can be viewed at the below link.

<https://www.dhs.gov/national-terrorism-advisory-system>

## Travel Alerts and Conditions

**Avalanche Hazard Reduction on Dalton Hwy Both Directions from mile marker 242 to mile marker 245. All Lanes Closed.**

For current driving conditions, dial 511 or visit: <https://511.alaska.gov/>

## Barry Arm Landslide / Tsunami Risk

For the latest information on the Barry Arm Landslide and Tsunami risk, click here:

<https://dggs.alaska.gov/hazards/barry-arm-landslide.html>

## Earthquakes

United States Geological Service (USGS) Earthquake Information: <http://earthquake.usgs.gov/>

National Tsunami Warning Center: <http://tsunami.gov/>

## Alaska Volcanoes

**Great Sitkin** Alert Level: **Watch** and Aviation Color Code: **Orange**

**Shishaldin** Alert Level: **Watch** and Aviation Color Code: **Orange**

**Trident** Alert Level: **Advisory** and Aviation Color Code: **Yellow**

**Kanaga** Alert Level **Advisory** and Aviation Color Code: **Yellow**

For Alaska Volcano updates, go to: <https://www.avo.alaska.edu/>

## Air Quality Index (AQI) Advisories

For the most up-to-date Air Quality Index Advisories:

<http://dec.alaska.gov/Applications/Air/airtoolsweb/Home/Index>

## Spills of Oil and Hazardous Substances

The Alaska Division of Environmental Conservation (ADEC) Spill Prevention and Response page is located at:

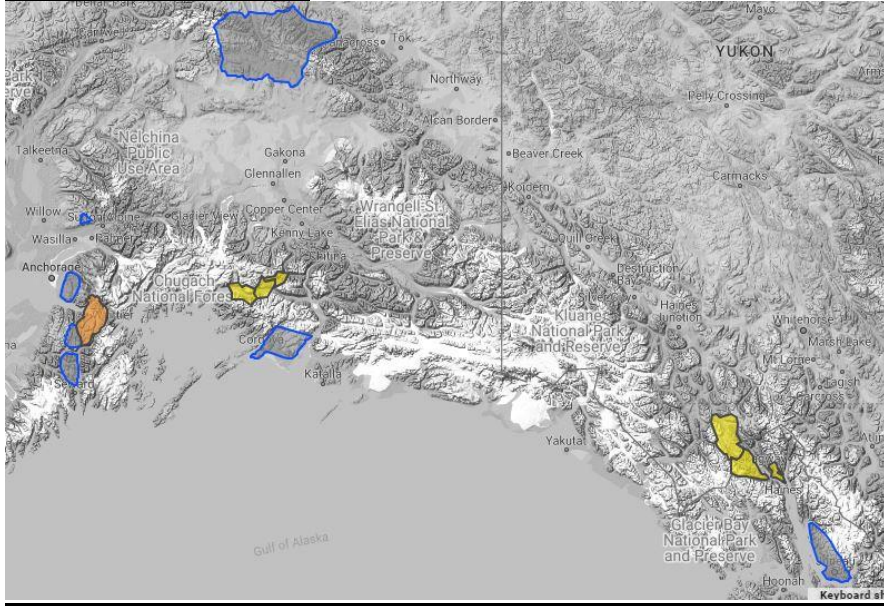
<https://dec.alaska.gov/spar/>

## Alaska Cyber Security Information

State Employees may sign up for cybersecurity notifications and alerts at

<https://oit.alaska.gov/security>

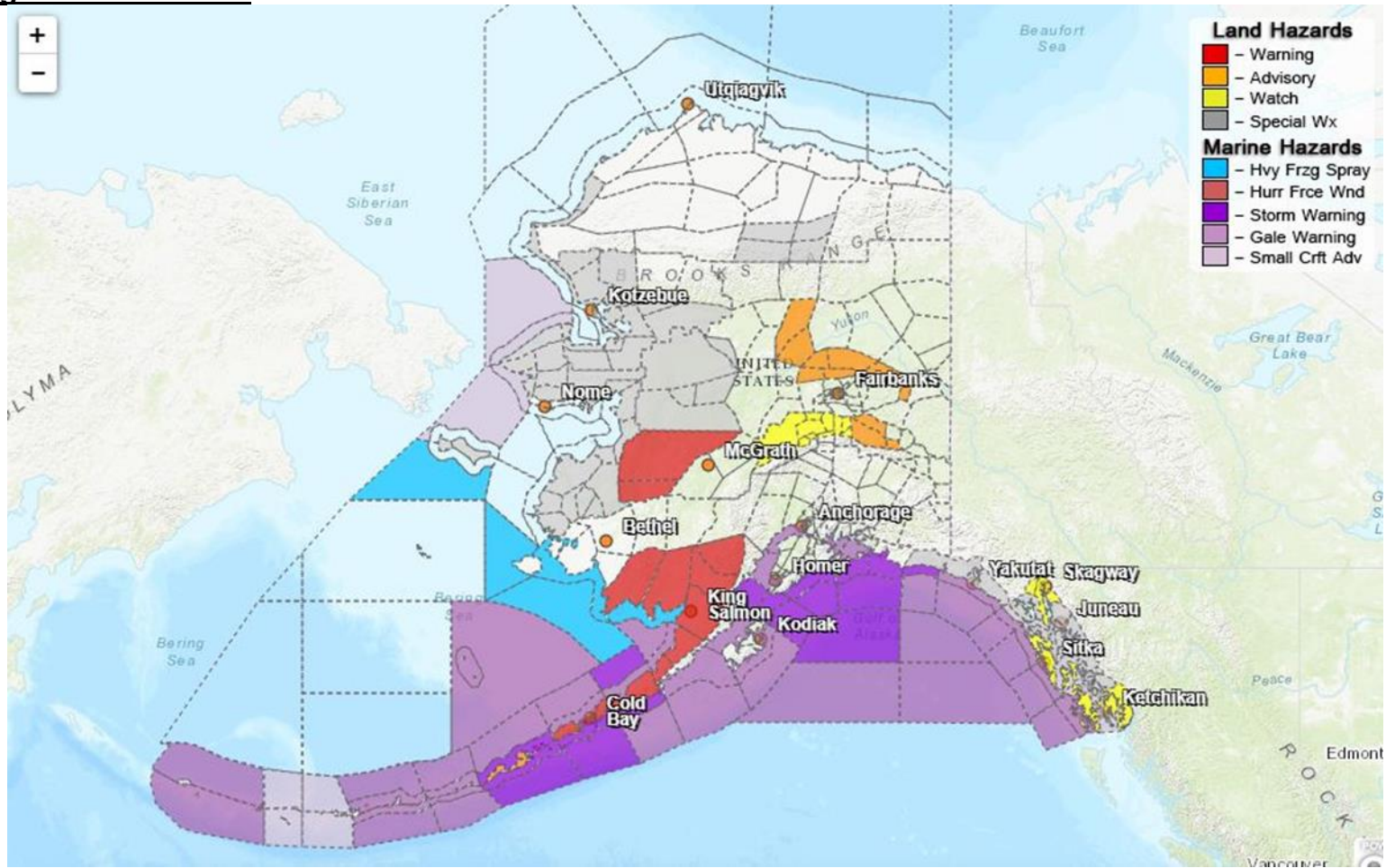
### Avalanche Hazards:



Avalanche danger for Turnagain Pass is high at all altitudes.  
Avalanche danger for Hatcher Pass is moderate at all altitudes.  
Avalanche danger for Valdez moderate at all altitude levels

For more information and the most current avalanche conditions, go to <https://alaskasnow.org>

### Significant Weather:



**Special Weather Statement: Kivalina and Red Dog Dock; Shishmaref; Bering Strait Coast; Yukon Delta Coast; St Lawrence Island**

- North winds are expected to increase to 30 mph through the Bering Strait, over St Lawrence Island and the Yukon Delta on Saturday, then increase to 40 mph Saturday night and continuing into Sunday.
- This will cause blowing snow with reduced visibility.

**Special Weather Statement: Central Brooks Range**

- South winds gusting to 35 mph are expected to develop over Atigun Pass Saturday afternoon and continue into Sunday.
- Blowing and drifting snow with reduced visibility are expected, causing travel difficulties.

**Special Weather Statement: Noatak Valley; Lower Kobuk Valley; Baldwin Peninsula; Northern Seward Peninsula; Upper Kobuk Valleys; Interior Seward Peninsula; Lower Koyukuk Valley**

- Snow is expected to develop Saturday and continue into Saturday night and possibly into Sunday. Several inches of snow are expected.

**Special Weather Statement: Eastern Norton Sound and Nulato Hills; Lower Yukon River; Middle Yukon Valley**

- Snow is expected to develop late tonight and continue into Saturday night. Snow could be heavy at times. Storm total snowfalls of 4 to 6 inches are expected.

**Winter Storm Warning: Lower Yukon and Innoko Valleys**

- Heavy snow is expected to develop late tonight and continue into Saturday night. Total snow accumulations of 7 to 10 inches.
- Travel could be very difficult to impossible. The cold wind chills as low as 35 below zero.

**Winter Weather Advisory: Dalton Highway Summits, White Mountains and High Terrain South of the Yukon River**

- Blowing snow with low visibility expected. Visibility one half mile or less at times. East winds gusting to 45 mph until 3 PM Sunday.
- Plan on difficult travel conditions. Areas of blowing snow could significantly reduce visibility. Snow drift will form.

**Winter Weather Advisory: Eastern Aleutians, including the communities of Nikolski, Unalaska, and Akutan.**

- Snow. Additional snow accumulations of up to two inches. Visibility of one-half mile or less. Winds gusting as high as 60 mph until noon Friday.
- Plan on difficult travel conditions. Areas of blowing snow could significantly reduce visibility. Strong winds could cause damage.

**High Wind Watch: Northern Denali Borough**

- South winds 50 mph with gusts to 80 mph possible until Sunday afternoon.
- Blowing snow will reduce visibility and cause snow drifts to form. Damaging winds could blow down trees and power lines. Power outages are possible.
- Fasten loose objects or shelter objects in a safe location prior to the onset of winds.

**Wind Advisory: Delta Junction and Eastern Alaska Range North of Trims Camp**

- East winds 40 mph with gusts 65 mph expected until 6 PM Sunday.
- Blowing snow will reduce visibility and cause snow drifts to form. Gusty winds could blow down trees and a few power outages may result.
- Travel could become difficult. Use extra caution when driving, especially if operating a high-profile vehicle. Secure outdoor objects.

**Blizzard Warning: Bering Sea coast of the Alaska Peninsula, including the communities of False Pass, Cold Bay, and Nelson Lagoon.**

- Blizzard conditions expected. Total snow accumulations of 1 to 6 inches. Northeast to northwest winds gusting as high as 70 mph until 12 PM Saturday.
- Falling and blowing snow with strong winds and poor visibilities are likely. This will lead to whiteout conditions, making travel very hazardous.

**Blizzard Warning: Bristol Bay coast, including Port Heiden and from Dillingham west to Goodnews Bay.**

- Blizzard conditions expected. Total snow accumulations of up to 9 inches. North wind gusting as high as 40 mph until 3 PM Saturday.
- Falling and blowing snow with strong winds and poor visibilities are likely. This will lead to whiteout conditions, making travel very hazardous.

**Winter Storm Watch: Haines and Klondike Highways, Haines, and Skagway**

- Total snow accumulations of up to 16 inches possible on the higher elevations of the Highways. Haines and Skagway may see snow accumulations around 4 to 7 inches. Winds could gust as high as 35 mph.
- Snow is expected to change to rain or at least a mix near the towns of Haines and Skagway late Saturday night or early Sunday which will limit snow totals in those locations.

**High Wind Watch: Baranof Island including Sitka and Port Alexander, Western Kupreanof Island and Kuiu Island, Prince of Wales Island, Ketchikan Gateway Borough, and Annette Island.**

- Southeast winds 20 to 30 mph with gusts up to 65 mph possible until Saturday night.
- High winds could blow around unsecured objects, damage property and cause power outages. Travel could be difficult. Secure vessels and loose objects.

**Special Weather Statement: City and Borough of Yakutat; Glacier Bay; Eastern Chichagof Island; Cape Fairweather to Lisianski Strait; City and Borough of Sitka; Admiralty Island; City and Borough of Juneau; Petersburg Borough; Western Kupreanof and Kuiu Island; Prince of Wales Island; City and Borough of Wrangell; Ketchikan Gateway Borough; Annette Island**

- A storm force front is expected to move into the area from the SW on Saturday spreading gusty winds and heavy precipitation across the region. Total rainfall of around 1 to 3 inches is expected across the region through Sunday.
- Gusts ranging in the 40 to 55 mph range Saturday afternoon into Saturday night.
- Expect another round of rain and wind especially for the southern panhandle Monday into Monday night. Currently no flooding is expected.

For more information and the most current weather, Watches / Warnings / Advisories go to:

<https://www.weather.gov/arh/>

**The Next Situation Report** will be **December 26, 2023**. A significant change in the situation or the threat level will prompt an interim report. This report is posted on the internet at

<https://ready.alaska.gov/sitrep>.

To register for email distribution, go to <http://list.state.ak.us/mailman/listinfo/dhsem.situation.report>.

Direct questions regarding this report to the SEOC at 907-428-7100 or [seoc@alaska.gov](mailto:seoc@alaska.gov)